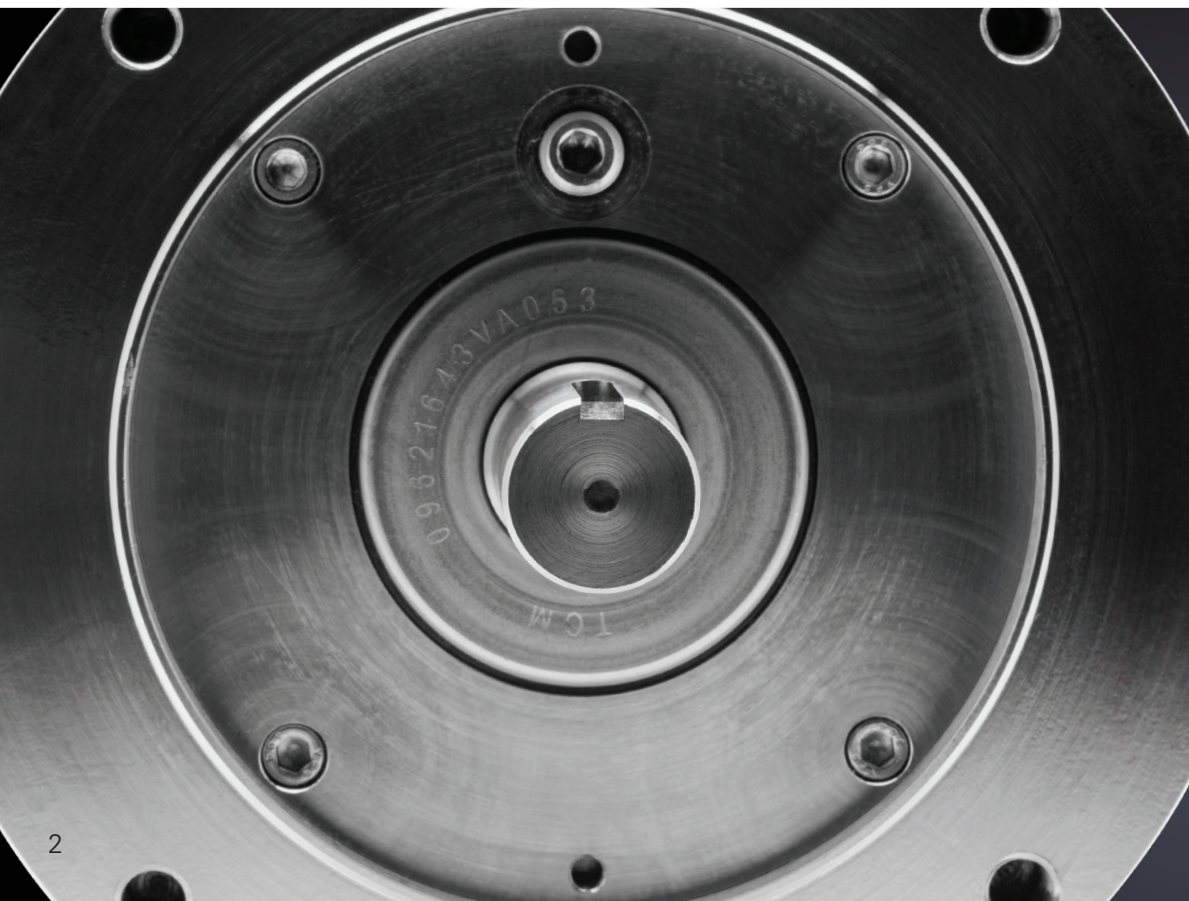


INDUSTRIAL EXTREME DUCK[®] ULTRA WASHGUARD[®] MOTORS

JANUARY 2022 | NORTH AMERICA, LATIN AMERICA





Extreme DUCK® ULTRA

WE SEALED EVERY AIR POCKET SO YOU CAN BREATHE EASIER.

There's a new, higher bar to cross in the washdown motor category, and we've just raised it—again. Building on the success of the industry-leading Extreme Duck series, we took it a giant leap forward with design enhancements to the body, making it more watertight than ever before. We're talking major improvements to the shaft seal technology to handle installation in any orientation, a welded conduit connection to the stainless steel body, and an exclusive vacuum epoxy encapsulation system that ensures whatever tries to get into the windings is effectively kept out. Water, oil, cutting fluid—go ahead, give it your best shot.

PHOTOS CLOCKWISE FROM TOP.

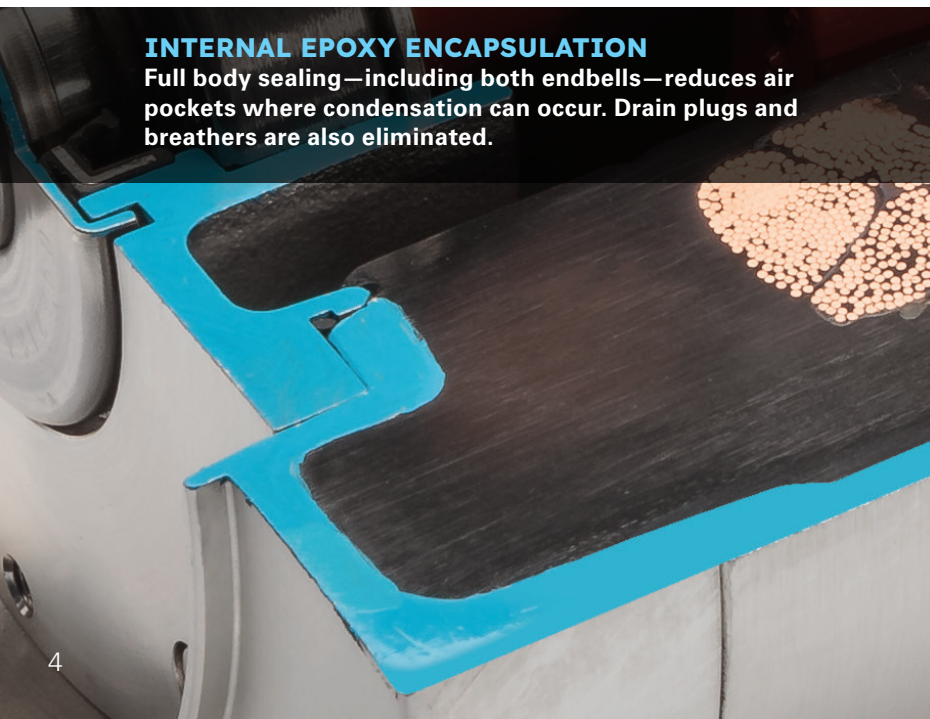
1. The new Extreme Duck ULTRA is rated IP69k for the most demanding installations. 2. The O-ring sealed conduit box protects non-wicking lead wires. 3. New, two-piece shaft seal technology provides three points of protection. 4. For ingress protection, the conduit box is welded to the stainless steel frame. 5. Four bolts secure the Q-Car™ rotor cartridge assembly to a dual O-ring seal design.

WHAT'S INSIDE KEEPS WHAT'S OUTSIDE OUT.

We know your motors have tough environments to face. With constant exposure to high pressure sprays and harsh chemicals, the slightest opening could lead to motor damage or bacteria build-up. That's why we didn't leave anything to chance, designing a motor more watertight than ever before. The entire motor housing—including the end bells—is encapsulated for unsurpassed sealing. All to help you avoid downtime and reduce replacement costs by keeping what's outside—out.

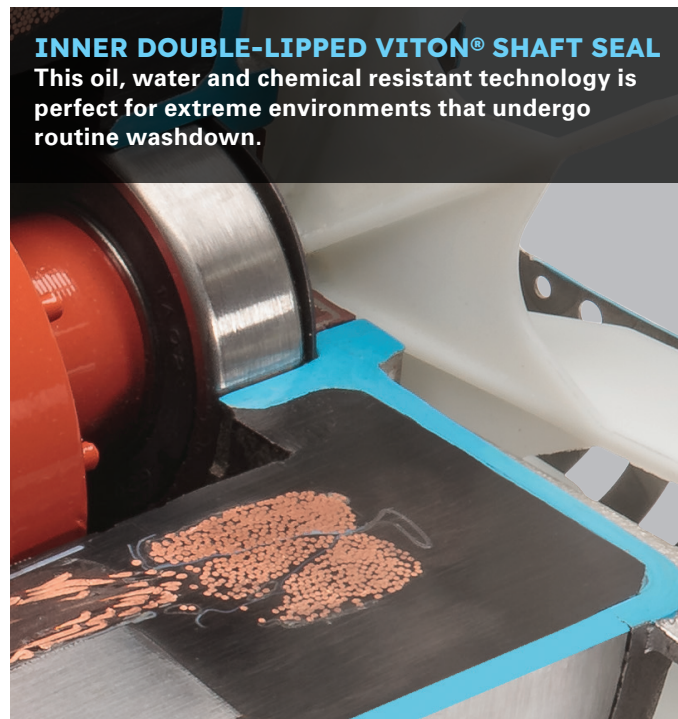
INTERNAL EPOXY ENCAPSULATION

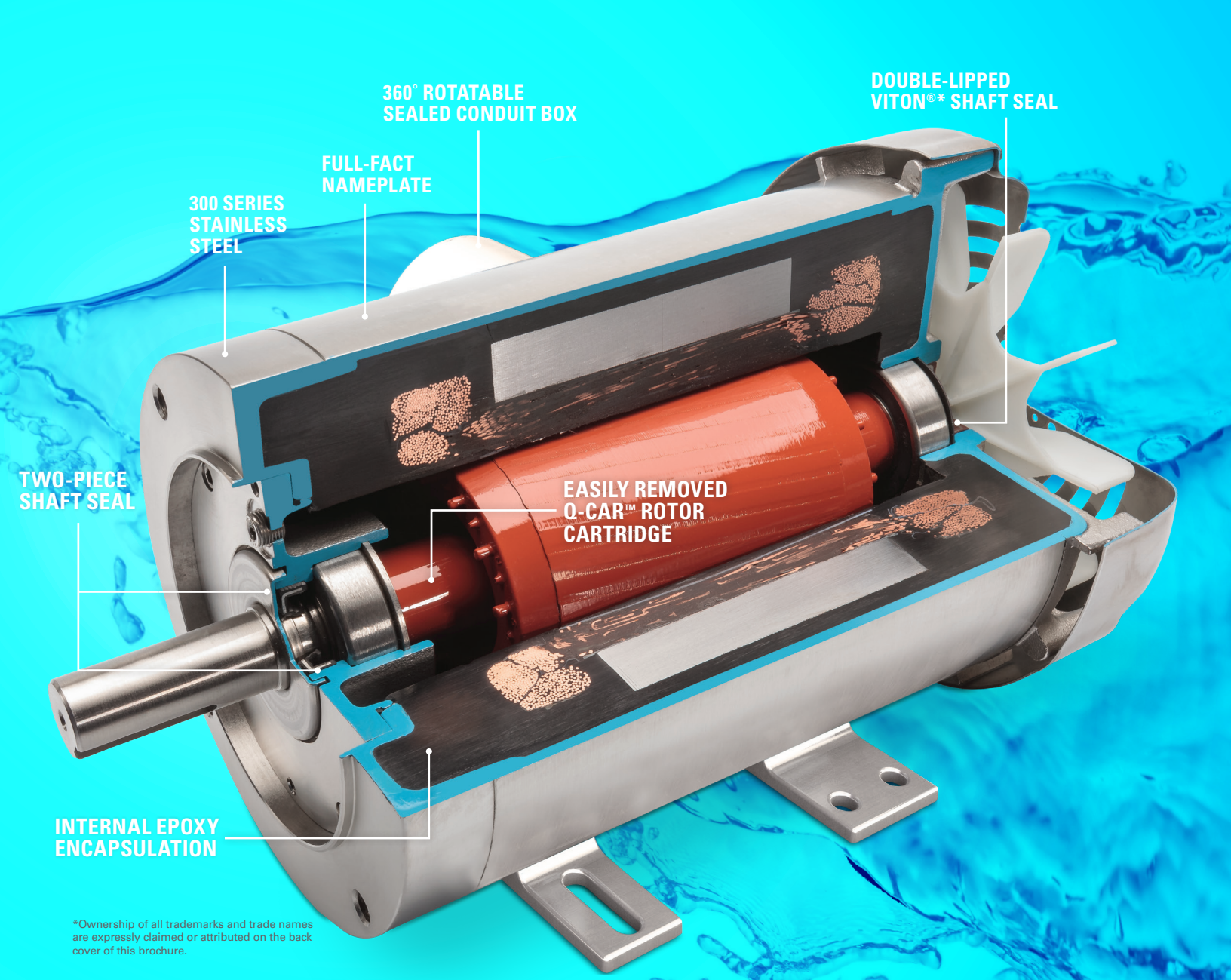
Full body sealing—including both endbells—reduces air pockets where condensation can occur. Drain plugs and breathers are also eliminated.



INNER DOUBLE-LIPPED VITON® SHAFT SEAL

This oil, water and chemical resistant technology is perfect for extreme environments that undergo routine washdown.





**360° ROTATABLE
SEALED CONDUIT BOX**

**DOUBLE-LIPPED
VITON®* SHAFT SEAL**

**FULL-FACT
NAMEPLATE**

**300 SERIES
STAINLESS
STEEL**

**EASILY REMOVED
Q-CAR™ ROTOR
CARTRIDGE**

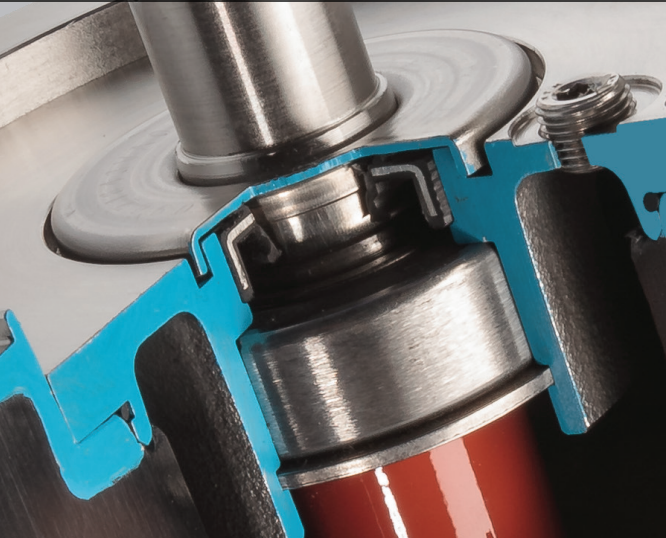
**TWO-PIECE
SHAFT SEAL**

**INTERNAL EPOXY
ENCAPSULATION**

*Ownership of all trademarks and trade names are expressly claimed or attributed on the back cover of this brochure.

TWO-PIECE SHAFT SEAL TECHNOLOGY

This unique design provides three points of protection on both ends of the motor, which contributes to IP69 certification.



360° ROTATABLE CONDUIT BOX

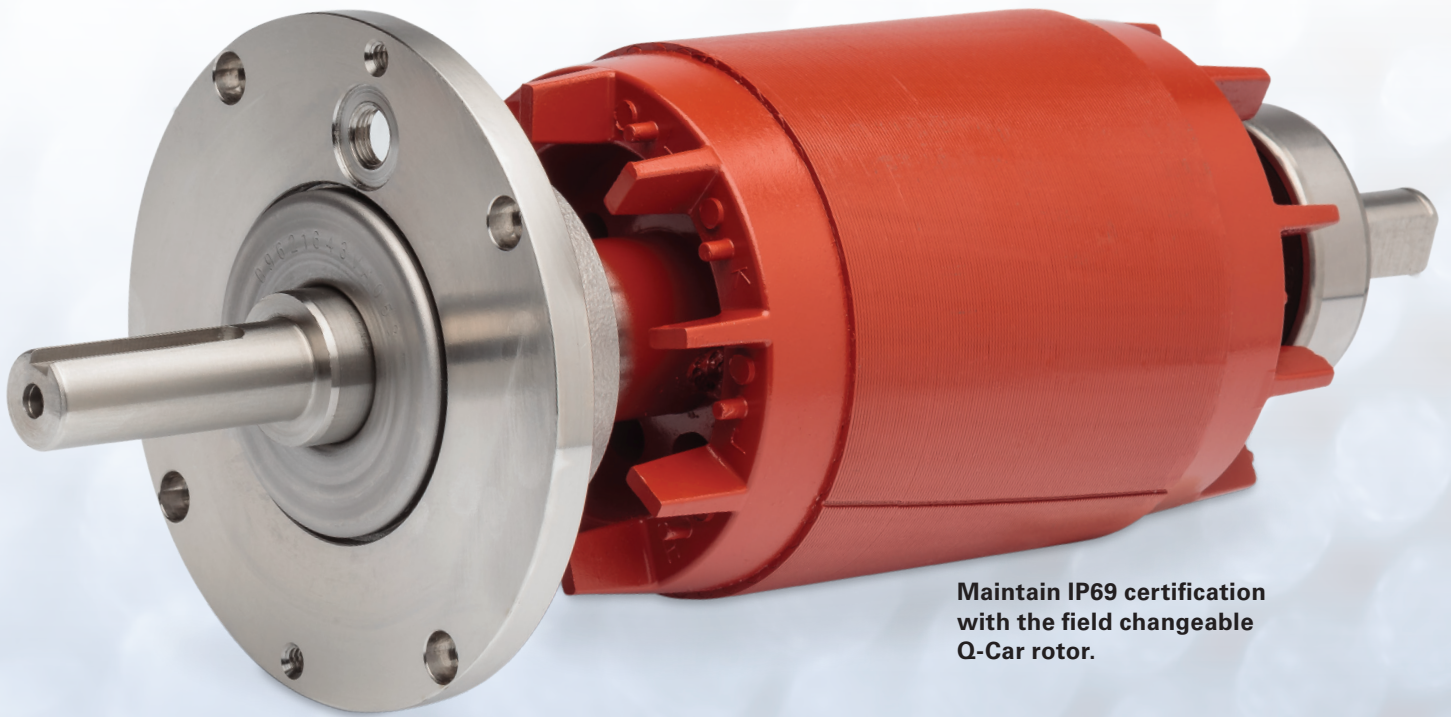
Gain easy access to non-wicking, color-coded leads that feature abrasion and chemical-resistant markers.



WE TOOK TIME TO WATCH YOUR INSTALLATION PROCESS.

ALL TO TAKE TIME AND EFFORT OUT OF IT.

We're always looking for ways to save you time and money. And that's exactly what we did by designing our removable Q-Car™ rotor cartridge. The exclusive design provides a quick and easy way to replace worn bearings. With the Q-Car replacement kit, you can replace the cartridge in 4 easy steps and the ultra-tight design ensures your motor remains watertight—just like the day you installed it.



Maintain IP69 certification with the field changeable Q-Car rotor.

ROTOR REPLACEMENT IN LESS THAN TEN MINUTES.

1. Remove external fan, fan guard and retaining ring from the end of the shaft.



2. Remove screws on Q-Car end and pull out old Q-Car.



LEESON[®] EXTREME DUCK[®] ULTRA MOTORS

**ARE TESTED AND COMPLIANT TO THE IP69K
STANDARD AND UL CERTIFIED TO IP69.**

This demanding third-party certification verifies the extraordinary sealing technologies that completely resist water ingress.

CAN YOUR MOTOR HANDLE THE PRESSURE?

- Water intrusion tests are conducted by placing the motor on a turntable rotating at 5 ± 1 revolutions per minute.
- Motor is sprayed at close range at a rate of approximately 4 gallons/16 liters per minute.
- Water spray pressure—measured at the surface—is between 1160-1450 PSI or Newtons.
- Water spray impact force is verified using an impact plate specified by the IEC60529 standard, certification category EOFI2.
- Water temperature is 176°F/80°C.
- Water nozzle is approximately 4-6 inches (150 mm) from the motor, sprayed at a variety of angles.

IP69K Compliant.
Third-party tested to
IP69K per DIN-40050-9.

IP69

3. Insert new O-Car™ into motor shell.



4. Reassemble external fan, retaining ring, fan guard and screws to motor.



A large, dynamic splash of water in shades of blue and white, framing the top and left sides of the page. The water is captured in mid-air, creating a sense of movement and freshness.

DON'T GIVE BACTERIA A FIGHTING CHANCE.

The modern food-processing environment is geared for safety. From facility design to conveyors to components, every detail has to be considered, and that's exactly why LEESON® Extreme Duck® Ultra motors were engineered.

With full stainless steel construction, these motors handle the high pressure spray and caustic chemical washdown environment. To keep food processing byproducts and fluids from being harbored on the motor, seams have been minimized, shafts fully sealed, and a new mounting design helps prevent the opportunity for bacterial build-up.

ACCORDING
TO THE CDC

48
Million

Americans contract a
food-borne illnesses
every year.

ACCORDING
TO THE FDA

153

Food products were
recalled due to possible
Listeria, Salmonella
and E.coli contamination.

ACCORDING
TO THE CDC

128,000

people were
hospitalized in 2018
from more than 250
identified food-borne
diseases.

USDA and FDA
Approved

BISSC and IP69
Certified

EXTREME DUCK® ULTRA COMPETITIVE COMPARISON

Feature	LEESON® Extreme Duck Ultra Motors	Baldor®* FoodSafe Encapsulated Motors	Baldor SSE Encapsulated Motors	Bluffton™** Hydro Duty®** Motors	Sterling™* Sterli-Seal™* Motors
Enclosure Rating (Ingress Protection)	IP69	IP69	IP69	IP66	IP66
Motor Encapsulation	Fully	Winding Only	Winding Only	Winding Only	Winding Only
Breather Plugs	Not Needed	√	√	√	√
2 piece Double Lip Viton®** seal SE	√	Single Lip Seal	Single Lip Seal	√	Single Lip Seal
Easy Bearing Maintenance	Q-CAR™ Rotor Cartridge	NO	NO	NO	NO
UL®* & CSA Testing Certification	UL file number IEC60529, IP69K Tested per UL DIN 40050-9, CSA	Product name not found on UL website	Product name not found on UL website	Product name not found on UL website	Product name not found on UL website
Sealed Colored Leads	√	√	√	NO	NO
Non-Wicking Leads	√				
Rotatable Conduit Box (TEFC)	360°	90° Increments	90° Increments	90° Increments	90° Increments
Warranty	3 year	3 year	3 year	1 year	1 year
Constant Torque Operation	10:1	4:1 CT	2:1 CT	N/A	10:1
Inverter Duty Rated	√	√	√	√	√
Insulation Class	Class H	Class H	Class H	Class F	Class H
Viton O-ring Seals Between Endbells and Frame	√	√	Neoprene	Material unknown	Material unknown
Screw on Conduit Box Cover with Viton O-Ring Seal	√	√	Neoprene	Material unknown	Material unknown
Shaft Grounding Rings	Available	NO	NO	NO	NO
1.15 Service Factor	√	√	√	√	√
60 Hz and 50 Hz Data on Nameplate	√	√	√	√	NO
CE Mark on Nameplate	√	NO	NO	NO	√

*Ownership of all trademarks and trade names are expressly claimed or attributed on the back cover of this brochure.

EXTREME DUCK® ULTRA 180/210

HP	RPM	Frame	Cat. No.	Motor Description	Price \$ (USD)
3	3600	184TC	132646.00	TEFC, 3HP, 3600RPM, 184TC, 3/60/230/460V	\$4,267
3	1800	184TC	132647.00	TEFC, 3HP, 1800RPM, 184TC, 3/60/230/460V	\$4,256
5	3600	184TC	132648.00	TEFC, 5HP, 3600RPM, 184TC, 3/60/230/460V	\$4,274
5	1800	184TC	132649.00	TEFC, 5HP, 1800RPM, 184TC, 3/60/230/460V	\$4,266
7 1/2	3600	213TC	141409.00	TEFC, 7.5HP, 3600RPM, 213TC, 3/60/230/460V	\$5,714
7 1/2	1800	213TC	141410.00	TEFC, 7.5HP, 1800RPM, 213TC, 3/60/230/460V	\$6,139
10	3600	215TC	141411.00	TEFC, 10HP, 3600RPM, 215TC, 3/60/230/460V	\$6,146
10	1800	215TC	141412.00	TEFC, 10HP, 1800RPM, 215TC, 3/60/230/460V	\$6,866

HP	RPM	Frame	Q-CAR Kit #	Q-CAR KIT Description	Price \$ (USD)
3	3600	184TC	176332.00	Q-CAR KIT - TEFC Design, 3HP, 3600RPM, 184TC	\$1,317
3	1800	184TC	176333.00	Q-CAR KIT - TEFC Design, 3HP, 1800RPM, 184TC	\$1,317
5	3600	184TC	176334.00	Q-CAR KIT - TEFC Design, 5HP, 3600RPM, 184TC	\$1,324
5	1800	184TC	176335.00	Q-CAR KIT - TEFC Design, 5HP, 1800RPM, 184TC	\$1,317
7 1/2	3600	213TC	176336.00	Q-CAR KIT - TEFC Design, 7.5HP, 3600RPM, 213TC	\$1,337
7 1/2	1800	213TC	176337.00	Q-CAR KIT - TEFC Design, 7.5HP, 1800RPM, 213TC	\$1,330
10	3600	215TC	176338.00	Q-CAR KIT - TEFC Design, 10HP, 3600RPM, 215TC	\$1,358
10	1800	215TC	176339.00	Q-CAR KIT - TEFC Design, 10HP, 1800RPM, 215TC	\$1,351

Prices and Data are subject to change without notice
Prices include 12/17/21 Price Increase

HERE'S A LITTLE SAVINGS- SIZZLE FOR YOU.

Investing in quality can have huge returns. The tougher the motor, the more you'll save by avoiding expensive downtime, maintenance and repair costs. See how two companies are using LEESON® motor technology to pay back big.

BEEF PROCESSING PLANT

PROCESSES: 10,000 cattle per week.

APPLICATION: 600 motors.

CHALLENGE: The motors face high pressure washdown conditions daily, consisting of bleach and boiling water. Depending on the application, typical motor life was only 3–12 months.

SOLUTION: Transition to Extreme Duck® Ultra motors.

RESULT

600
Motors | **\$940,000+**
Saved in downtime and motor purchases over five years

BACON PROCESSING FACILITY

PRODUCES: 3 million pounds of bacon per week.

APPLICATION: 26 white epoxy washdown pump motors.

CHALLENGE: Washdown conditions include high-pressure spray with high-temperature cleaning solutions once a day. The motors were experiencing high failure rates, with the typical life averaging only 3–4 months.

SOLUTION: Existing motors were replaced with Extreme Duck® Ultra motors.

RESULT

26
Motors | **\$64,000+**
Saved over 3 years

HP	SYN RPM 60 Hz	NEMA Frame	Catalog Number	Voltage	OCAR™ KIT	Baldor®* FoodSafe Model #	Baldor Super E Model #	Bluffton™* Motor Works HydroDuty®* Model # / Cat #	Sterling™* Sterli-Seal™* Model #
THREE PHASE—TOTALLY ENCLOSED—C FACE WITH BASE—IP69									
1/2	3600	56C	117118.00	208-230/460	176294.00	CFSWDM3537-E	CSSEWDM3537	1321007115 / 53087	
1/2	1800	S56C	103411.00	208-230/460	176297.00				
1/2	1800	56C	117119.00	208-230/460	176250.00	CFSWDM3538-E	CSSEWDM3538	1321007115 / 53087	SIY054MHI-E
1/2	1200	56C	119266.00	208-230/460	176299.00	CFSWDM3539-E	CSSEWDM3539	1311017133 / 53141	
3/4	3600	56C	117120.00	208-230/460	176295.00	CFSWDM3541-E	CSSEWDM3541	1323007110 / 53093	
3/4	1800	S56C	103412.00	208-230/460	176297.00			1311017121 (56C) / 53135	SIY074PHI-E
3/4	1800	56C	117121.00	208-230/460	176251.00	CFSWDM3542-E	CSSEWDM3542	1321007113 / 53088	
3/4	1200	56C	119267.00	208-230/460	176300.00	CFSWDM3543-E	CSSEWDM3543	1311017134 / 53143	
1	3600	56C	117122.00	230/460	176252.00	CFSWDM3545-E	CSSEWDM3545	1313017156 / 53131	
1	1800	56C	119975.00	230/460	176253.00	CFSWDM3546-E	CSSEWDM3546	1321007112 / 53089	
1	1800	56C	119511.00	208-230/460	176254.00			1311017115 / 53136	SI0014PHI-E
1	1800	143TC	122219.00	208-230/460	176255.00	CFSWDM3546T-E	CSSEWDM3546T	1311017124 / 53139	XI0014PHI-E
1	1200	56C	119513.00	230/460	176301.00	CFSWDM3556-E	CSSEWDM3556	1311017138 / 53145	
1-1/2	3600	143TC	121879.00	230/460	176296.00	CFSWDM3550T-E	CSSEWDM3550T	1313017155 (145TC) / 53100	
1-1/2	1800	56C	119522.00	230/460	176261.00	CFSWDM3554-E	CSSEWDM3554	1311017110 / 53090	SIY154PHI-E
1-1/2	1800	145TC	121880.00	230/460	176256.00	CFSWDM3554T-E	CSSEWDM3554T	1311017111 / 53098	XIY154PHI-E
2	3600	145TC	121881.00	230/460	176257.00	CFSWDM3555T-E	CSSEWDM3555T	1313017153 / 53101	
2	1800	56HC	119523.00	208-230/460	176258.00	CFSWDM3558-E	CSSEWDM3558	1311017114 (56C) / 53091	SI0024PHI-E
2	1800	145TC	121882.00	230/460	176259.00	CFSWDM3558T-E	CSSEWDM3558T	1311017113 / 53099	XI0024PHI-E
3	3600	56C	119526.00	230/460	176302.00				
3	3600	184TC	132646.00	230/460	176332.00				
3	1800	184TC	132647.00	230/460	176333.00			H311007101 (185TC) / 53154	XI0034PHI-E (182TC)
5	3600	184TC	132648.00	230/460	176334.00	CFSWDM3613T-E	CSSEWDM3613T		
5	1800	184TC	132649.00	230/460	176335.00	CFSWDM3615T-E	CSSEWDM3615T	H311007102 (184TC) / 53156	XI0054PHI-E
7-1/2	3600	213TC	141409.00	230/460	176336.00	CFSWDM3709T-E	CSSEWDM3709T		
7-1/2	1800	213TC	141410.00	230/460	176337.00	CFSWDM3710T-E	CSSEWDM3710T		XIY754PHI-E
10	3600	215TC	141411.00	230/460	176338.00	CFSWDM3711T-E	CSSEWDM3711T		
10	1800	215TC	141412.00	230/460	176339.00	CFSWDM3714T-E	CSSEWDM3714T		XI0104PHI-E
THREE PHASE—TOTALLY ENCLOSED—C FACE LESS BASE									
1/3	1800	48C	103417.00	208-230/460	176303.00				
1/2	3600	56C	117126.00	208-230/460	176294.00	VFSWDM3537-E	VSSEWDM3537	1323007113 / 53109	
1/2	1800	48C	103418.00	208-230/460	176304.00				
1/2	1800	S56C	103413.00	208-230/460	176305.00				
1/2	1800	56C	117127.00	208-230/460	176250.00	VFSWDM3538-E	VSSEWDM3538	1321007121 / 53114	SIY054MCI-E
3/4	3600	56C	117128.00	208-230/460	176295.00	VFSWDM3541-E	VSSEWDM3541	1323007114 / 53110	
3/4	1800	S56C	103414.00	208-230/460	176297.00				
3/4	1800	56C	117129.00	208-230/460	176251.00	VFSWDM3542-E	VSSEWDM3542	1321007117 / 53115	SIY074PCI-E
1	3600	56C	117130.00	230/460	176252.00	VFSWDM3545-E	VSSEWDM3545	1313017161 / 53111	
1	1800	56C	119976.00	230/460	176253.00	VFSWDM3546-E	VSSEWDM3546	1321007125 / 53116	
1	1800	56C	119512.00	208-230/460	176254.00	VFSWDM3546-E	VSSEWDM3546	1311017123 / 53138	SI0014PCI-E
1-1/2	3600	143TC	121908.00	230/460	176296.00	VFSWDM3550T-E	VSSEWDM3550T		
1-1/2	1800	56C	119520.00	208-230/460	176261.00	VFSWDM3554-E	VSSEWDM3554	1311017117 / 53117	SIY154PCI-E
1-1/2	1800	145TC	121909.00	230/460	176256.00	VFSWDM3554T-E	VSSEWDM3554T	1311017118 / 53122	XIY154PCI-E
2	3600	145TC	121910.00	230/460	176257.00	VFSWDM3555T-E	VSSEWDM3555T	1313017158 / 53120	
2	1800	145TC	121911.00	230/460	176259.00	VFSWDM3558T-E	VSSEWDM3558T	1311017120 / 53123	XI0024PCI-E
2	1800	56C	119524.00	208-230/460	176258.00	VFSWDM3558-E	VSSEWDM3558	1311017119 / 53118	SI0024PCI-E
3	3600	56C	119525.00	208-230/460	176307.00				
THREE PHASE—TOTALLY ENCLOSED—C FACE WITH BASE—SHAFT GROUNDING RING									
1/2	1800	56C	117906.00	208-230/460					
3/4	1800	56C	117907.00	208-230/460					
1	1800	56C	119527.00	208-230/460					
1-1/2	1800	56C	119528.00	230/460					
1-1/2	1800	143TC	122221.00	230/460					
2	1800	56C	119529.00	230/460					
2	1800	145TC	122222.00	208-230/460					
3	3600	56C	119530.00	230/460					
THREE PHASE—TOTALLY ENCLOSED—C FACE LESS BASE—SHAFT GROUNDING RING									
3	3600	56C	119531.00	230/460					

Green items are premium efficient. *Ownership of all trademarks and trade names are expressly claimed or attributed on the back cover of this brochure.



Industrial Solutions Regal Rexnord

Regal Beloit America, Inc.

100 E. Randolph Street
PO Box 8003
Wausau, WI 544002 USA
715-675-3311

Regal Beloit America, Inc.

1051 Cheyenne
Grafton, WI 53024 USA
262-377-8810

www.regalbeloit.com

The proper selection and application of products and components, including assuring that the product is safe for its intended use, are the responsibility of the customer. To view our Application Considerations, please visit <https://www.regalrexnord.com/Application-Considerations>.
To view our Standard Terms and Conditions of Sale, please visit <https://www.regalrexnord.com/Terms-and-Conditions-of-Sale> (which may redirect to other website locations based on product family).

The following trademarks or trade names are believed to be the trademarks or tradenames of their indicated owners and are not controlled by Regal Beloit Corporation: Baldor and SSE—ABB ASEA BROWN BOVERI LTD; Viton—THE CHEMOURS COMPANY FC; Bluffton and Hydroduty—BLUFFTON MOTOR WORKS LLC.; Sterling and Sterli-Seal—STERLING ELECTRIC, INC.; NEMA Premium—NATIONAL ELECTRICAL MANUFACTURERS ASSOCIATION; UL—UL LLC LIMITED LIABILITY COMPANY.

"Regal Rexnord" is not indicative of legal entity.

Regal, LEESON, Extreme Duck, IRIS, Q-Car and Washguard are trademarks of Regal Beloit Corporation or one of its affiliated companies.

©2020, 2021 Regal Rexnord Corporation, All Rights Reserved.

MCB21053E • Form L0017E

The Regal Rexnord logo, featuring a stylized "R" icon followed by the words "RegalRexnord" in a bold, sans-serif font.