

MOTOR APG MONOFASICO

USO GENERAL, ABIERTO

CARACTERÍSTICAS:

- Diseño de alta eficiencia Capacitor de arranque / Capacitor de trabajo
- Aislamiento Clase F
- Uso continuo
- Rango de voltaje extendidos 110-127/220-254 Volts
- Rotación reversible (CW/CCW)
- Temperatura Ambiente 40° C
- Armazón 48Y con flecha 5/8" Diam. X 1.88" largo, 3 1/2" altura de flecha y base de montaje armazón 56



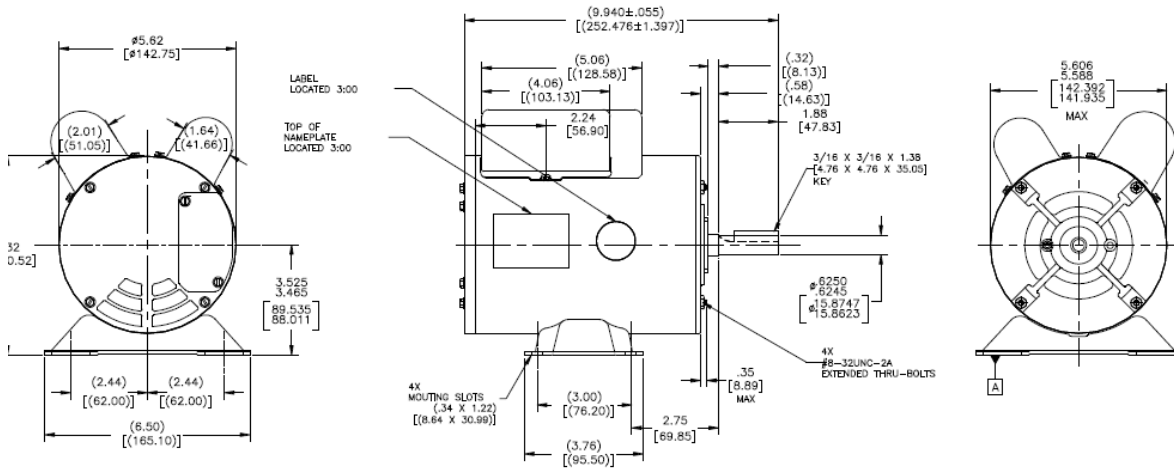
Cumple o excede niveles
de eficiencia NOM-014



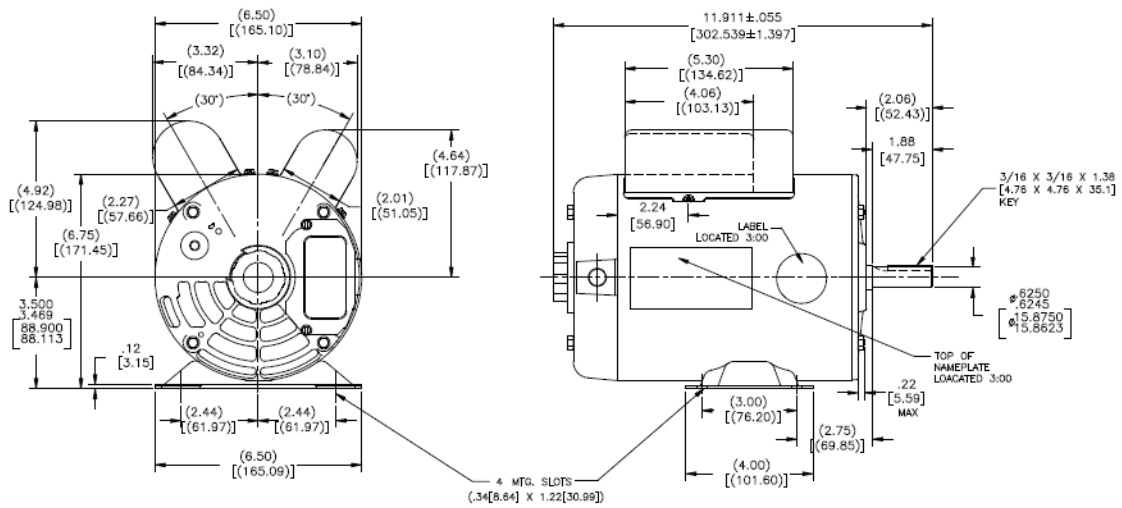
Monofasico ODP Base Rigida

HP	RPM	Volt	Frame	Cat No.	Modelo No.	F.L. AMPS	PESO (LBS)	DIM "C"	FACTOR DE SERVICIO
1/2	3600	110-115/208-230	56	JR005	K48AA83F07CX	7.8/3.9	10.43	9.97	1.25
1/2	1800	110-115/208-230	56	JR006	K48AA87F07CX	7.90/3.95	11.34	10.73	1.25
3/4	3600	110-115/208-230	56	JR007	K48AA84F07CX	11.0/5.5	11.79	10.25	1.25
3/4	1800	110-115/208-230	56	JR008	K56AC52F07CX	10.8/5.4	13.15	11.98	1.25
1	3600	110-115/208-230	56	JR009	K56AC48F07CX	13.4/6.7	13.61	10.84	1.25
1	1800	110-115/208-230	56	JR010	K56AC53F07CX	11.9/5.95	16.33	12.35	1.25
1 1/2	3600	110-115/208-230	56	JR011	K56AC49F07CX	18.0/9.0	18.14	11.72	1.15
1 1/2	1800	110-115/208-230	56	JR012	K56AC54F07CX	18.08/9.04	19.96	13.35	1.15
2	3600	110-115/208-230	56	JR013	K56AC50F07CX	26.4/13.2	17.24	14.35	1.15
2	1800	110-115/208-230	56	JR014	K56AC55F07CX	26.8/13.5	22.68	14.35	1.15
3	3600	110-115/208-230	56	JR015	K56AC51F07CX	27.2/14.1	20.94	13.15	1.15
3	1800	110-115/208-230	56	JR016	K56AD49F07CX	31.4/15.4	23.43	15.48	1.15

K48



K56AC



K56AD

